

Denomination : Electro-pneumatically controlled quick opening vent valve
Replacement of vent valve acc. to fabric-no. 1.1601/17/45

Type	: KEV	DN	: G 1/2"	PN	: 16
Directive	: 2014/68/EU	Location	: Indoor		
Examination	: 01 202 973-B-16-0005-01	Flanges	: N/A		
Examination	: Works inspection certificate	Weight	: appr. 10 kg		

Operating data

Flow medium	: Natural Gas
Working pressure	: 0,8 bar
Medium temperature	: 15 °C
Control air pressure	: 4 bar
Control voltage	: 230 V 50 Hz

Design data

Allwd. oper. pressure	: 3,5 bar
Allwd. oper. Temp.	: +100 °C
Allwd. Ambient temp.	: - 20 up to + 60 °C
Control air pressure	: 4 up to 8 bar

Set -Function : Quick opening by means of spring force without auxiliary energy
Opening time ≤ 1 second
Closing with auxiliary energy

Materials : Body : ☒ P250GH Certificate acc. to EN 10204-3.1
Valve cone and innerparts : 1.4021
Valve cone gasket : ☒ NBR
Stem sealing : By O-rings
Stem bearing : By maintenance free PTFE sleeve bearing

Actuator : Piston with opening spring, piston diameter 65 mm
Cylinder-tube from Al Si Mg 0,5 F22

Accessories

1	Pcs	3/2-Way-Solenoid valve G 1/4	Type : 9601430 3805	Make : IMI-Herion
		Protection class : <input checked="" type="checkbox"/> IP65, <input type="checkbox"/> Ex	Power consump. : 10,6 W	
		Special features :		
N/A	Pcs	Quick exhaust valve	Type :	Make :
2	Pcs	Limit switches <input checked="" type="checkbox"/> On <input checked="" type="checkbox"/> Off	<input checked="" type="checkbox"/> mechanical	Inductive
		Type : Z4VH335-11z-2763	Make : Schmersal	Protective class <input checked="" type="checkbox"/> IP67
		Special features :		
1	Pcs	Protective cover, transparent, 2 cable entrees M20x1,5		
		Contr. Connections with : <input type="checkbox"/> Strainer, <input type="checkbox"/> Ball valve, <input type="checkbox"/> Throttle,		All G <input type="checkbox"/>
		Cabeling : <input checked="" type="checkbox"/> Without <input type="checkbox"/> Connector HAN, <input type="checkbox"/> Terminal box IP65, <input type="checkbox"/> Ex		
		<input type="checkbox"/> Only limit switch <input type="checkbox"/> Limit switch & solenoid valve		
		Control-connections : <input type="checkbox"/> Standard pipe 1.4301 Fittings chrome plated		
		<input type="checkbox"/> Complete stainless steel 1.4571 <input type="checkbox"/> Tube Cu, Fittings brass		
Painting	: <input checked="" type="checkbox"/> Kühme-Standard RAL 1021 "rape yellow"	<input checked="" type="checkbox"/> Acc. to previous contract 1.1601/17		

Notes : The strengthness test according to EN 12266-1 chapter A.2 will be executed with air
Execution: identical to previous supplied valve type KEV acc. to contract 1.1601/17/45
Not included: air release pipe downstream of KEV, pressure switch with accessories attached underneath of KEV.

safe and reliable



Type KEV

Intermediate Venting Valve for Gaseous Media Electro-Pneumatic Operated

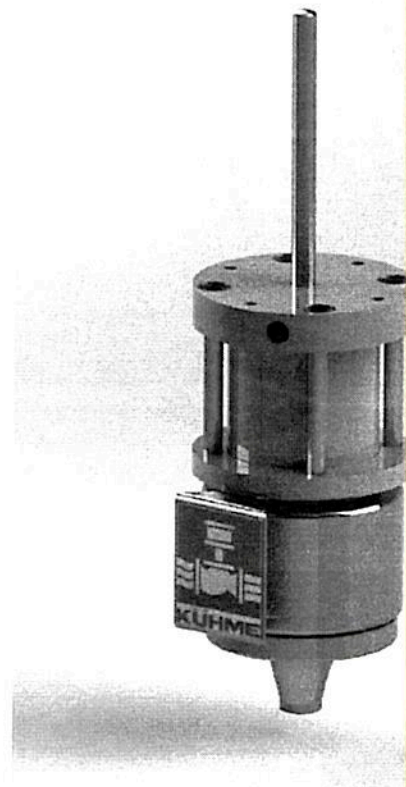
Edition: 06.21
Subject to change without notice

APPLICATION AREA

- > Gas firing systems on steam boilers
acc. to DIN EN12952/12953
- > Industrial thermoprocessing equipment
acc. to DIN EN 746
- > Pipe systems for gaseous media
for all industrial sectors

ADVANTAGE

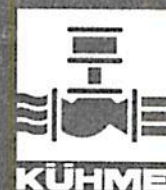
- > Opening time < 1 sec
- > High safety level through zero leakage
- > Heavy duty design for high operating cycles
- > High performance valve design for long service life



safe and reliable

Type KEV

Intermediate Venting Valve for Gaseous Media Electro-Pneumatic Operated



DN 15-25 PN 16 (40)

APPLICATION

- > Automatic operated vent device
- > In gas pipes intermediate double block and bleed unit
- > Venting valve for leak tightness devices

TECHNICAL DATA

- > Single-seated angle valve
- > Exchangeable plug gasket
- > Maintenance-free guide bushing
- > Piston actuator with integrated opening spring

CERTIFICATES

EC-Type examination (Modul B)
acc. to directive 2014/68/EU

EC- Type examination certificate
with product-identnumber
acc. to gas appliance regulation EU/2016/426

based on:
DIN EN 13611 / DIN EN 161 / DIN EN 16304

Certificate: > SIL2 / EN 61508

OPERATING DATA (GENERAL)

Media:	> Gaseous fuels acc. to PED 2014/68/EU > Fuels acc. to G260; gas group 1., 2. and 3 > Other gaseous media
Operating pressure:	Max. 16 bar g
Operating temperature:	-29 to 180 °C
Ambient temperature:	-29 to 80 °C
Control medium:	Compressed air at 4-8 bar g
Air quality:	acc. to DIN ISO 8573-1
Control voltage*:	230 V, 50 Hz, 24 V DC
Power*:	10.6 VA / 6.8 W
IP Protection Class:	IP 65
Mounting position:	No restriction
Mounting location:	Indoor/Outdoor

*The determined individual operating and design data
based is displayed in the valve specification sheet
submitted along with the quotation!*

OPTION

- > With limit switches
- > With solenoid valve*
- > Protection cover

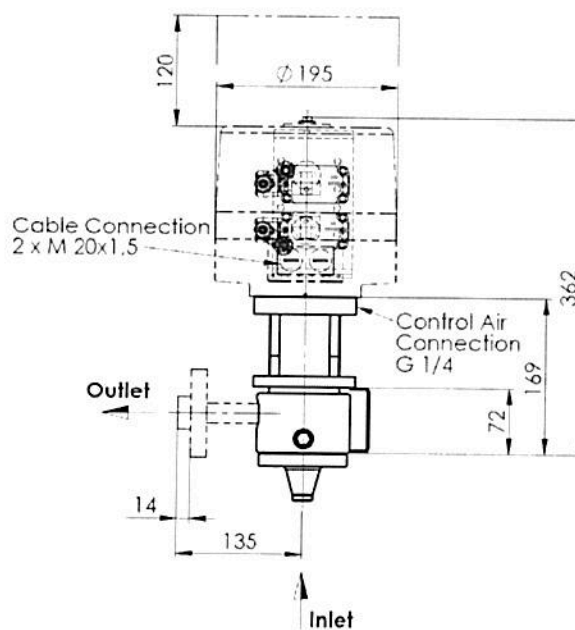
safe and reliable

Type KEV

Intermediate Venting Valve for Gaseous Media Electro-Pneumatic Operated



DN 15-25 PN 16 [40]



DIMENSIONS

Inlet		Outlet			
Flange		Thread		Loose Flange	
DN	PN	Internal Thread		DN	PN
15	16 [40]	G 1/2		15	16 [40]
		G 3/4		20	
		G 1		25	

MATERIALS*

Body:	P250GH
Plug gasket:	Elastomer
Piston sealing:	Elastomer
Actuator:	Steel/Aluminium

* Other materials and accessories are available on request.

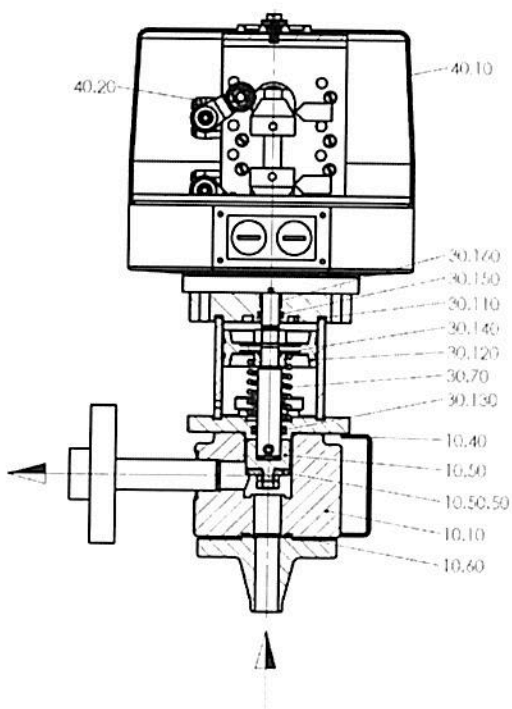
safe and reliable

Type KEV

Intermediate Venting Valve for Gaseous Media Electro-Pneumatic Operated



DN 15-25 PN 16 (40)



- 10.10 Body
- * 10.40 O-Ring
- 10.50 Plug
- * 10.50.50 Plug gasket
- * 10.60 O-Ring
- * 30.70 Compression spring
- * 30.110 Gasket
- * 30.120 T-Duo Sleeve
- * 30.130 O-Ring
- * 30.140 O-Ring
- * 30.150 O-Ring
- 30.160 DU-Bushing
- * 40.10 Protection cover
- * 40.20 Limit Switch
- * **Spares**